



ORIGINAL ARTICLE

A New Species of Genus *Anthocopa* (*Atoposmia*) Latreille (Hymenoptera:Apoidea: Megachilidae) from India

Virendra Kumar

Department of Zoology, D.S. College, Aligarh

Email: vv_kv28@rediffmail.com

ABSTRACT

A new species *Anthocopa* (*Atoposmia*) *coimbtorensis* of genus *Anthocopa* Latreille has been described. The distinctive features of this species are: Integument- Black; with slight redness on terga, legs, tegulae and sterna; fore-tarsi are setaceous pale with their apices brown, Eyes brown'. Pubescence-Golden yellow all over the body at parts mixed with golden and white hairs, tergal fasciae remarkable legs and abdomen with not much denser median pubescence, as was in *auriculata*. Sternum 6 (a)- Exposed and smooth. (b) Surface slightly convex, with few minute punctures. (c) Apical margin (i) laterally angulated and with a fringe of short and fine hairs on both the lateral angles, (ii) medially angulated obtusely and with a fine fringe of hairs.

Key words: *Anthocopa*, *Atoposmia*, *coimbtorensis*

Received: 11th Feb. 2018, Revised: 23rd Feb. 2018, Accepted: 26th Feb. 2018

©2018 Council of Research & Sustainable Development, India

How to cite this article:

Kumar V. (2018): A New Species of Genus *Anthocopa* (*Atoposmia*) Latreille (Hymenoptera: Apoidea: Megachilidae) from India. *Annals of Natural Sciences*, Vol. 4[1]: March, 2018: 148-150.

INTRODUCTION

The record of Indian *Anthocopa* does not stand so old as of Fauna', which I have been continuously referring with the proceeding genera described in my work. Here I am strictly confined to the genus *Anthocopa* of Michener, which was considered to be merged down with *Hoplitis* (1944), but still maintaining its separate identity. The first record of this genus affiliated with the *Hoplitis* Klug was put forward by Cameron (1908) undergone *Megachili*. The affinities of *Anthocopa cathena*, *anonyma*, *indostana* species by Cameron (1908), were being described with *Anthocopa*. I can confirm the placement of this species with the characters of tridentate mandibles, long proboscis reaching up to the posterior coxae. The species which has been placed under this subgenus also justified to be a new one.

REVIEW LITERATURE

Anthocopa Lepl. & Serville, 1825, Encyel, methodique, historia naturelle. insecta. 10:314, type species *Apis Papaveris* Latr. (*monobasic*). *Phyllotoma* Dume'ril, 1860. Mem. Acad. Sel.Inst. Imp. France 31:842. *Pseudosmia* Radoszkowski, 1872, Horae Soc. Ent. Rossicae 8:19. *Osmia* (*Haplosmia*) Thomson, 1872, Hym. Scand. 2:233. *Osmia Erythoania* Schmiedeknecht, 1886. *Apidae Europene* 2:866. and 0. (*Furcosmia*), 1886. 2:888. *Osmia* (*Atoposmia*) Cockll., 1935, Pan-Pacif. Ent. 11:50. *Anthocopa* Michener, 1943. (subgeneric revision), Ann. Ent. soc. Amer. 36: 66 (*Eremosmia*), 74 (*exosmia*), 77 (*Phaeosmin*), and p. 81 (*xerosmia*). *Anthocopa* Michener, 1944. Bull. Amer. Mus. Nat. Hist. 82 263. Genotype, *Apis papaveris* Latr.

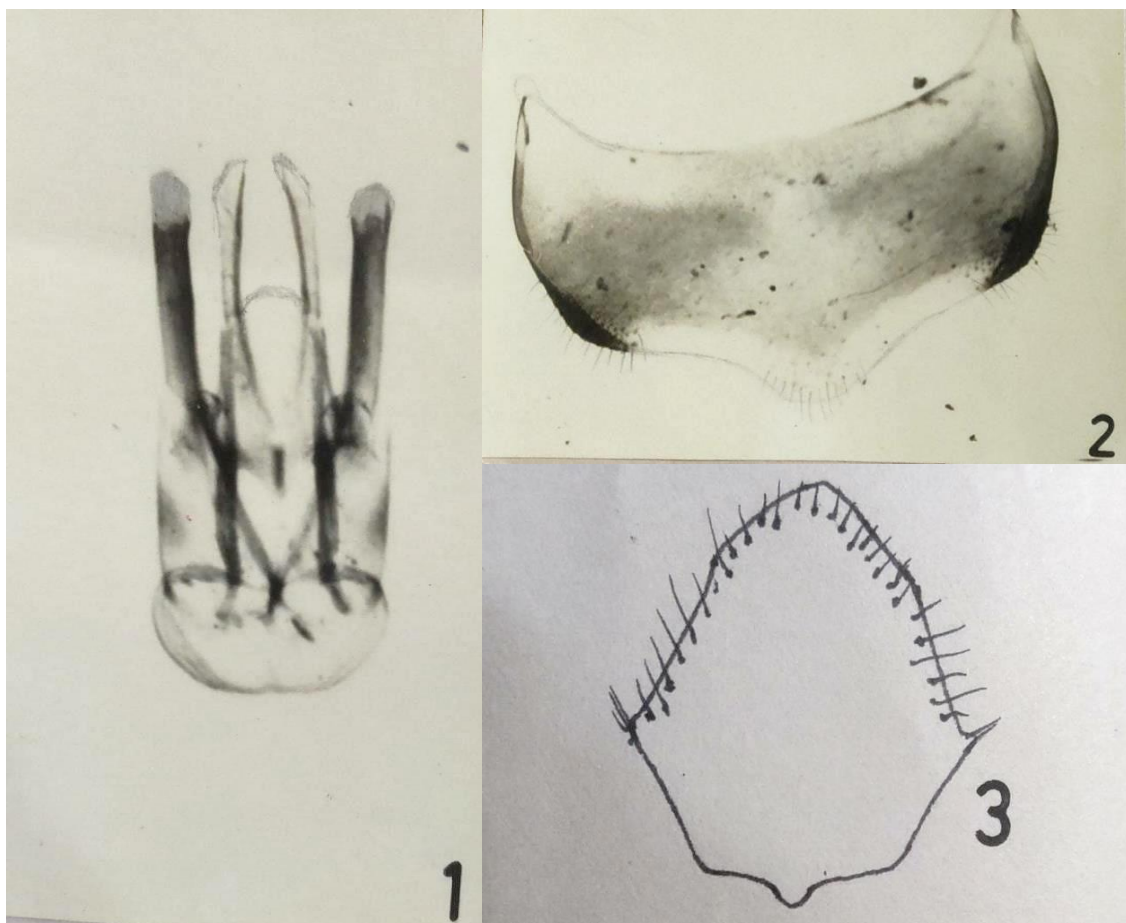


Fig. 1-3: Male *Anthocopa (Atoposmia) coimbtorensis* sp. nov. (1. Genitalia, 2. Sternum 6 and 3. Sternum 8)

METHODOLOGY

The comparative study of morphological characters of this species with prior described species characters makes the way to differentiate and identify the species as a new species. The specific characters of the new species are: *Anthocopa (Atoposmia) coimbtorensis* sp. nov.

Male: Total length - 280 lines (7 mm).

Integument- Black; with slight redness on terga, legs, tegulae and sterna; fore-tarsi are setaceous pale with their apices brown. Eyes brown.

Pubescence- Golden yellow all over the body at parts mixed with golden and white hairs, tergal fasciae remarkable legs and abdomen with not much denser median pubescence, as was in *auriculata*.

Genitalia-

Gonobase (a) Rounded and broad. (b) Apical margin medially incurved, broader than the basal margin.

Gonoforceps-

(a) Gonocoxites- (i) broad, elongated and bare. (ii) basal lobe slightly dilated; apically narrow.

(b) Gonostylus- (i) elongated, rod-shaped and without setae, (ii) constricted at base on the apex of gonocoxite, (iii) inner margin slightly protuberent medially, (iv) outer margin flattened and straight, (v) apex-rounded.

Volsellae-

(a) Quite evident and with normal size. lobe - broad. (c) Apical lobe- triangular and pointed apically.

Penis valve-

(a) Elongated, narrow and flattened laterally. (b) Inner margin- concave. (c) Outer margin- straight. (d) Apex broad and blade like (e) Penis (1) broad, short and membranous, (ii) withslightly convex apical end.

Sternum 6-

(a) Exposed and smooth. (b) Surface slightly convex, with few minute punctures. (c) Apic margin (1) laterally angulated and with a fringe of short and fine hairs on both the lateral angles, (ii) medially angulated obtusely and with a fine fringe of hairs.

Sternum 7- Obsolescent.

Sternum 8-

(a) Apical lobe - broad basally and narrow or pointed apically. (b) Basal lobe - broad and slightly narrow basally. (c) Basal margin laterally invaginated but protuberent medially.

MATERIAL EXAMINED:

Holotype; Male, no more paratypes and allotypes with us.

REMARKS/RESULTS

Prior to forwarding, in to the subgeneric placement of existing species or the new one with us, I would like to summarise the species record, their justification as well certain characters, which are affiliated with their taxa-recognition.

Female- Not known.

This species has been named after the place coimbtore, from where it was collected.

REFERENCES

1. Anthocopa Lepl. and Serville (1825): Encyel, methodique, historia naturelle. Insecta. 10:314, type species Apis Papaveris Latr. (monobasic).
2. Anthocopa Michener (1943): (subgeneric revision), Ann. Ent. soc. Amer. 36: 66 (Eremosmia), 74 (exosmia), 77 (Phaeosmin), and p. 81(xerosmia).
3. Anthocopa Michener (1944): Bull. Amer. Mus. Nat. Hist. 82 263. Genotype, Apis papaverisLatr.